



GROVE[®]
worldwide



Self-Propelled Aerial Work Platform

MZ66B

The MZ66B aerial work platform from Grove Manlift meets your requirements for a compact, self-propelled telescoping boom machine with outstanding reach and working height.

Look at these features:

- 500 lbs. (220 kg) of unrestricted platform capacity.
- 66 ft. (20.1 m) working height.
- Hydraulically-operated 180° platform rotator.
- Proportional controllers with adjustable "ramp to zero" for drive, boom elevation, boom extension/retraction and swing.
- All-steel, 3-section boom featuring patented Grove trapezoidal design.
- Fully controllable from ground level.

Standard Equipment

Aluminum work platform assembly with 44 in. (1.12 m) high railing, 4 in. (0.10 m) kickplate, control console mount, rear access bar gate and inside handrail.

Proportional controllers for drive, boom elevation, boom extension/retraction and swing. Non-proportional controls for steering, platform level and rotate, high/low drive speed, ignition on/off/start, auxiliary power and emergency stop.

Double-acting lift cylinder with boom elevation from -17° to 75°. Integral holding valve.

Mechanically-synchronized boom assembly, with double-acting telescope cylinder and integral holding valve.

Ball bearing-type turntable swing bearing with 360° continuous rotation. Hydraulically-driven Grove planetary gearbox. Automatic spring-applied, hydraulically released disc brakes and plunger type mechanical swing lock.

Pressure/flow compensated, variable displacement axial piston hydraulic pump with 26 gpm (98.4 lpm) capacity. Maximum system operating pressure of 3500 psi (241 bar).

Hydraulic reservoir with integral sight level gauge.

15 micron hydraulic pressure filter, 25 micron return filter, suction strainer and magnetic plug in reservoir.

42.5 hp Nissan A15 4-cylinder water-cooled gasoline engine.

Fuel gauge on top of tank.

12-volt DC negative ground electrical system.

50-amp alternator.

Automatic spring-applied, hydraulically-released disc type brakes.

Options

36 x 72 in. (0.92 x 1.83 m) or 36 x 96 in. (0.92 x 2.44 m) platform.

110-volt AC wiring to platform, with dual outlets on platform, 15-amp resettable circuit breaker, ground fault circuit interrupter, and plug and junction box on turntable.

2000-watt, 110-volt AC generator with two outlets on platform.

120 psi (8.27 bar) air power to platform, with quick disconnect coupler on turntable for air supply and coupler on platform.

Nissan A15 dual fuel engine.

31.5 hp Deutz F2L-511 2-cylinder air-cooled diesel engine.

4-wheel drive.

Fire extinguisher.

Platform-mounted halogen work lights.

Amber strobe lights on chassis.

Halogen travel lights (drive and back-up) on chassis.

Foam-filled tires.

Hostile Environment Protection Package.

Special paint.



Optional 36 x 96 in. (0.92 x 2.44 m) platform.

Specifications

MZ66B

Platform

Working Height66 ft. (20.1 m)
 Platform Height60 ft. (18.3 m)
 Horizontal Reach 48 ft. 8 in. (14.8 m)
 Platform Capacity 500 lbs. (220 kg)

Dimensions

Platform Size 36 x 60 in.
 (0.92 x 1.53 m)
 Overall Height (stowed) 7 ft. 11.5 in.
 (2.43 m)
 Overall Length 25 ft. 4 in. (7.72 m)
 Overall Width 7 ft. 11 in. (2.41 m)
 Wheelbase8 ft. (2.44 m)
 Outside Turning Radius.....18 ft. (5.5 m)
 Ground Clearance 12.75 in. (0.32 m)
 Tailswing (beyond tires).. 4 ft. 4 in. (1.32 m)

Performance

Maximum Drive Speed .. 3.0 mph (4.8 km/h)

Gradeability

2WD 25%
 4WD 50%
 Tire Size 15 x 19.5
 Tire Fill Air

Power Source

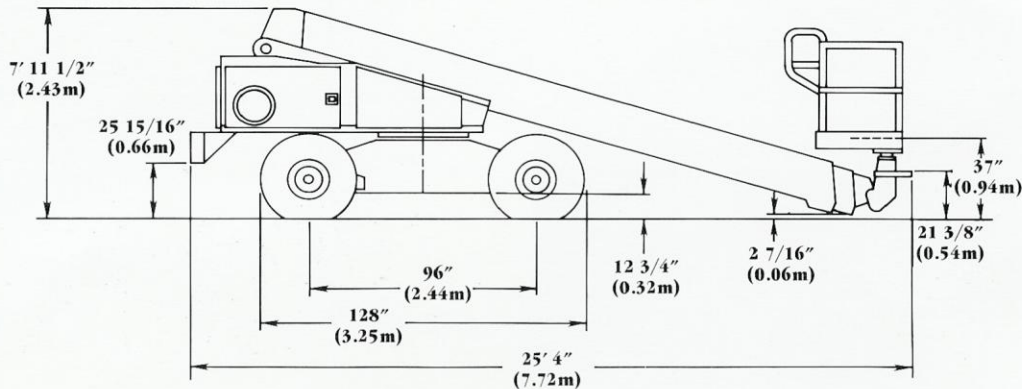
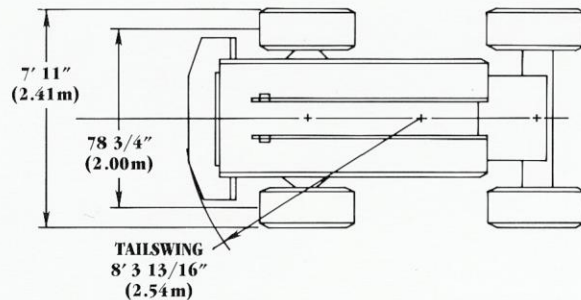
Engine Make/Model Nissan A15
 Engine Horsepower 42.5
 Fuel Tank Capacity 30 gal. (114 liters)

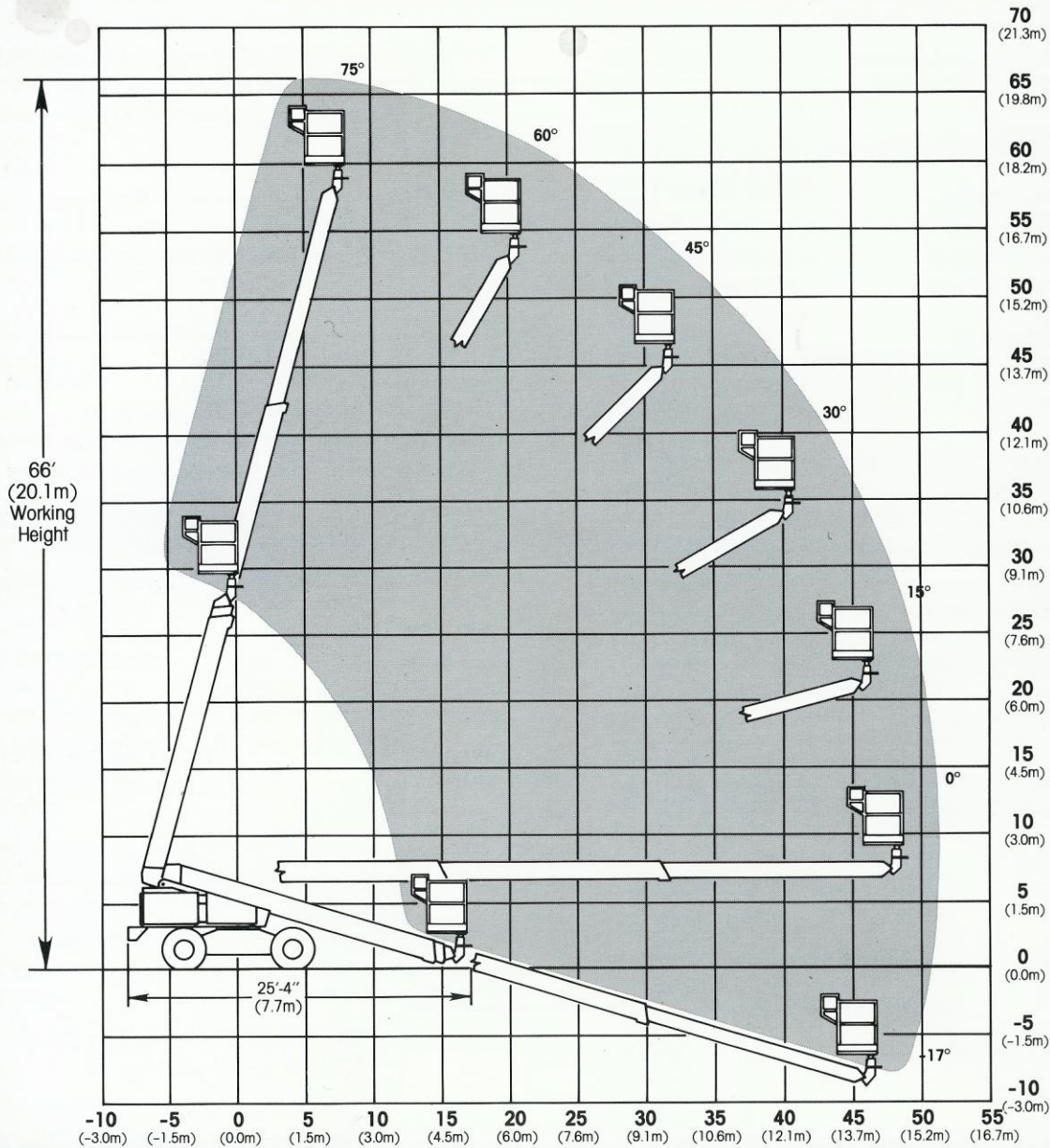
Hydraulics

Reservoir Capacity 30 gal. (114 liters)
 Hydraulic Pump Type Piston
 Auxiliary Power Yes

Shipping Information

Weight20,500 lbs. (9300 kg)
 Shipping Cube 1,419 cu. ft. (40.2 m³)





Grove Worldwide—World Headquarters
 1565 Buchanan Trail East
 Shady Grove, Pennsylvania 17256
 Phone:(717) 597-8121 Telex:1842308 Fax:(717) 597-4062

Grove North America
 P.O. Box 21, Shady Grove, Pennsylvania 17256
 Western Hemisphere, Asia/Pacific
 Phone:(717) 597-8121 Telex:1842308 Fax:(717) 597-4062

Grove Europe*
 Sunderland, England SR4 6TT
 Europe, Africa, Middle East, Near East
 Phone:(091)565-6281 Telex:53484 CRANES G Fax:(091) 564-0442

*Grove Coles Limited, Registered in England, Number 1845128. Registered office, Crown Works, Pallion, Sunderland, Tyne & Wear, England SR4 6TT.

Constant improvement and engineering progress make it necessary that we reserve the right to make specification, equipment, and price changes without notice. Illustrations shown may include optional equipment and accessories and may not include all standard equipment.

Distributed By:

COAST CRANE COMPANY

ANCHORAGE
 2361 Cinnabar Loop
 Anchorage, Ak. 99507
 Fax: (907) 344-4613
 PHONE: (907) 349-7610

SEATTLE
 1531 Utah Ave. So.
 Seattle, Wa. 98134
 Fax: (206) 682-2987
 PHONE: (206) 622-1151
 800-669-2726

SPOKANE
 3920 East Boone Ave.
 Spokane, Wa. 99202
 Fax: (509) 534-7104
 PHONE: (509) 535-4266
 800-829-4266